

# Delaware Quilts



## New Year's Eve Mystery

### Step eleven: Different sizes



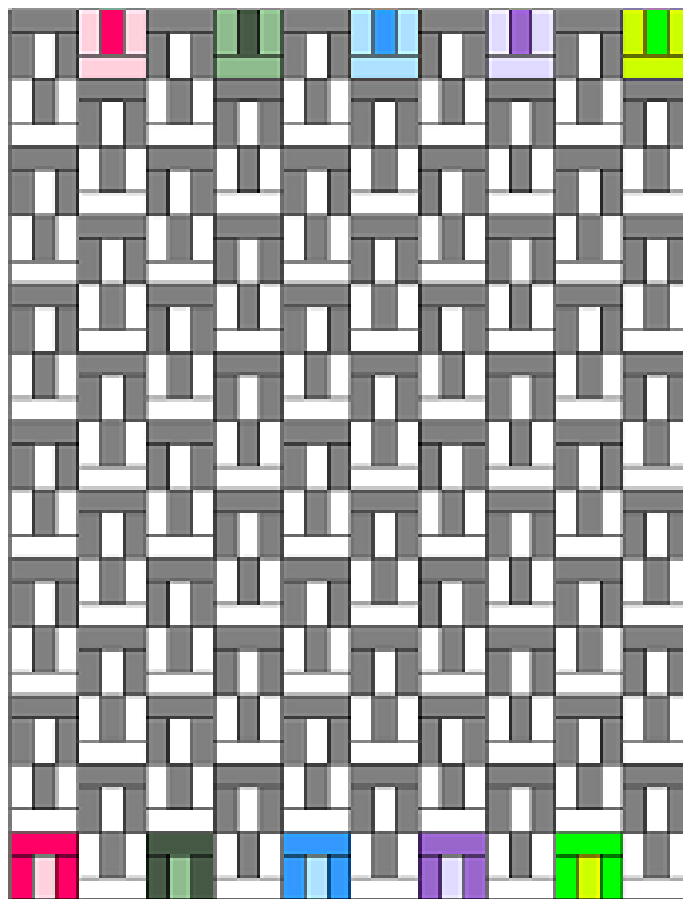
Janet (on the left) started this quilt back in 2011 and was working on it at the Spring Retreat that year. She brought it along to show at this year's Spring Retreat. I asked her where she got the pattern and she said to email her. Well I didn't want to wait, so I drafted the pattern in Electric Quilt and made my own version and shared it with you all. This was Mystery #26 on the Mysteries For Relay group and Project #4 for the fall Quilters Retreats and now the New Year's Eve Mystery.

For a lap quilt you need 21 whole blocks and seven half blocks and the quilt is set three and a half blocks long by seven blocks wide, making the center finish about 42 inches square.



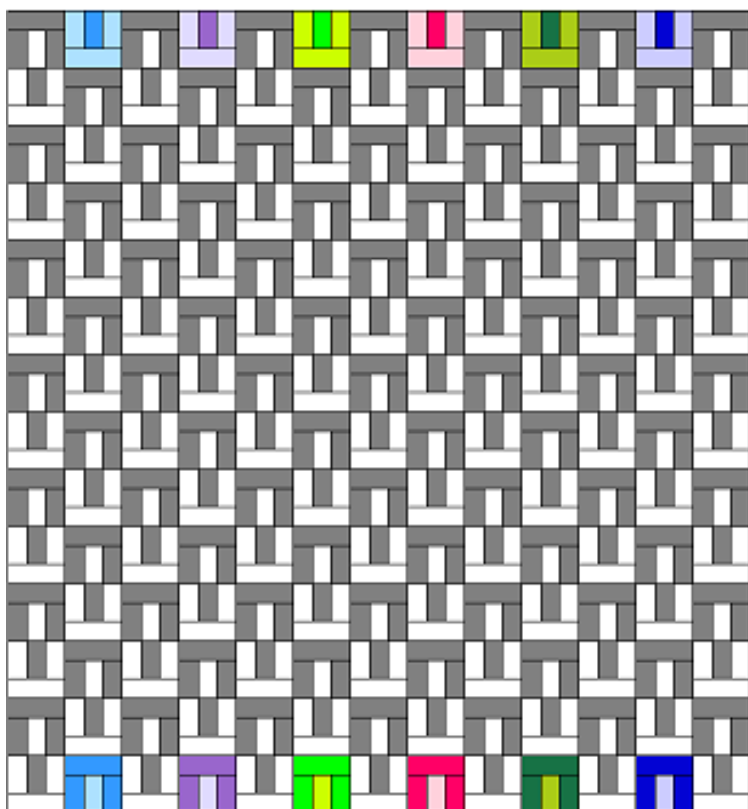
This pattern can be used for personal use only and can not be used commercially without the owner's permission. No copies may be made without the owner's permission. This includes the patterns as well as any graphics and/or instructions that are associated with a pattern.

For a twin (right) you need 65 blocks and the quilt is set six and a half long by ten blocks wide, making the center finish about 60 by 78.



For a double (left) you need 91 blocks and the quilt is set seven blocks long by thirteen blocks wide, making the center finish about 78 by 84.

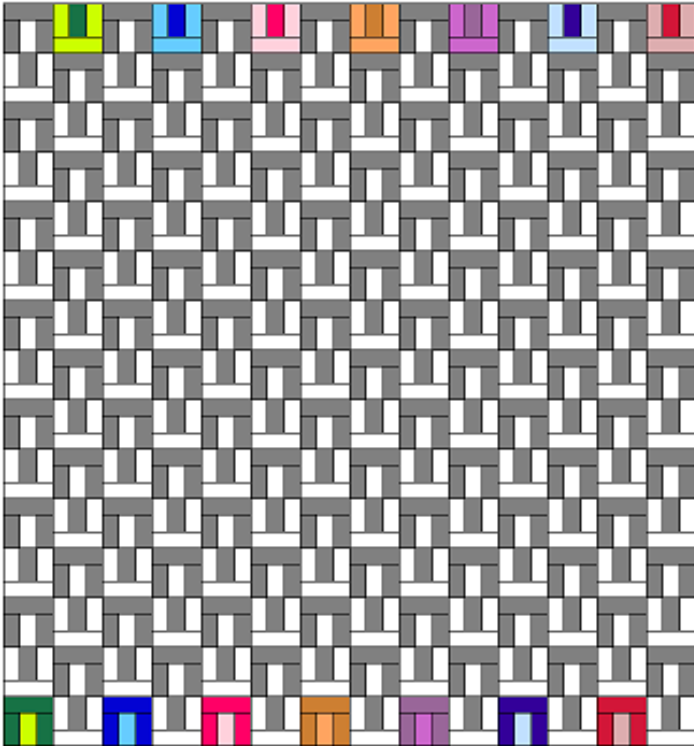
Put the opposite halves at the beginning and end of alternating columns. It kind of breaks it up and makes it less boring than just alternating blocks.



For a queen shown below (84 by 90) you need 105 blocks and the quilt is set seven and a half blocks long by fourteen blocks wide, making the center finish about 84 by 90.

Notice how I put alternating light and dark halves in the alternating columns. For a king (102 by 90) you need 128 blocks and the quilt is set seven and a half blocks long by seventeen wide, making the center finish about 102 by 90.

Borders, there are many options, piano keys like Janet's (pg 1), smaller squares made from leftovers, or just plain strips.



Here are two of my quilts made using this pattern. (They are not finished in these pictures, waiting their turn to be quilted.)

This pattern can be used for personal use only and can not be used commercially without the owner's permission. No copies may be made without the owner's permission. This includes the patterns as well as any graphics and/or instructions that are associated with a pattern.